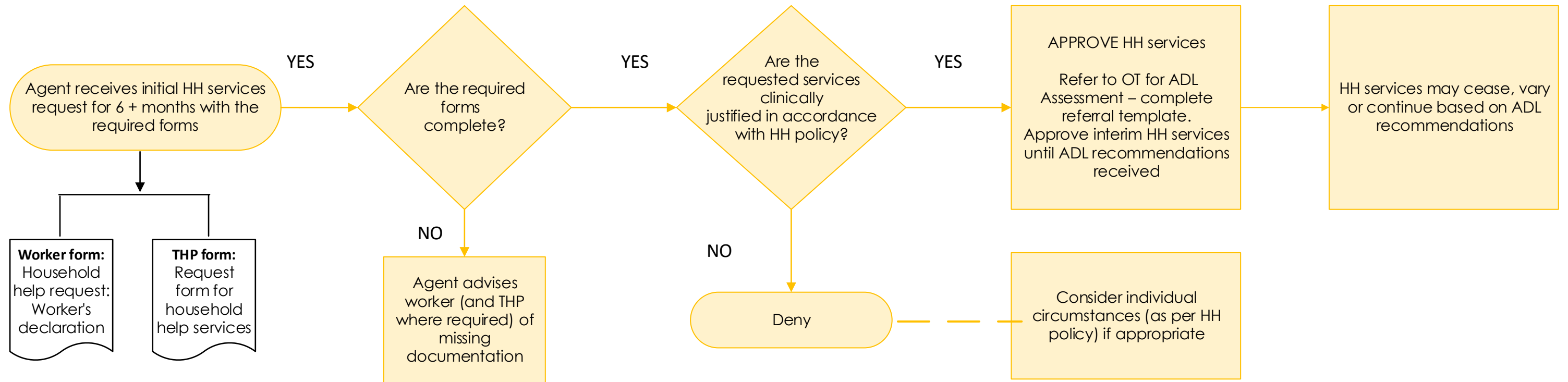


Long Term Household Help Ready Reckoner

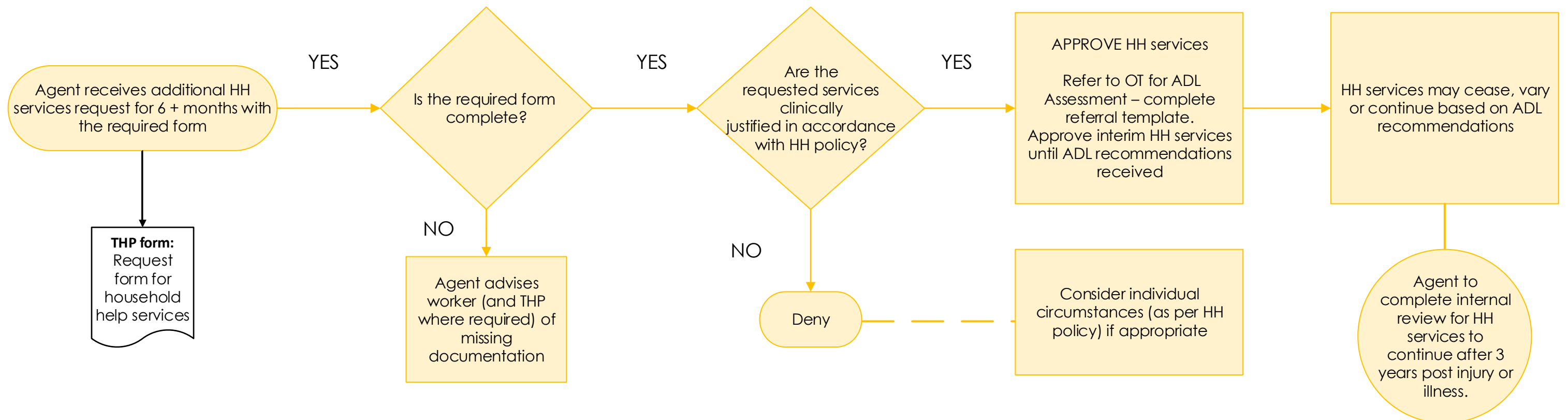
LONG TERM HOUSEHOLD HELP (HH) SERVICES

Criteria: Initial HH request is for 6+ months* due to nature of injury and clinically based recommendation from THP and/or ADL



EXTENSION OF LONG TERM HH SERVICES

Criteria: Additional HH request after long term services following expiry of ADL based approval



Guidance for Short Term Household Help Ready Reckoner

* = as detailed in section 8 of the **Request form for household help services**

THP = Treating health practitioner

OT = Occupational therapist

ADL = Activities of daily living

- Agents will be unable to consider funding household help services unless both the Request form for household help services and Worker Declaration form have been provided to the Agent.
- If the **Household help request: Worker declaration** has not been received the agent must contact the worker directly. Completion of the worker declaration is required only once per claim.
- If the **Request form for household help services** has not been received, the agent must contact the worker to request they follow up with their THP.
- Once Agent receives missing documentation return to the start of Stage 1.
- For initial 6 week approvals, return to the start of Stage 1 until 12 weeks has been reached before moving to Stage 2.
- A **Request form for household help services** is not required for the period in which an ADL assessment report recommends approval of HH services. Once an approval expires, an updated **Request form for household help services** is required for the Agent to reconsider approving additional services.

Guidance for Long Term Household Help Ready Reckoner

* = as detailed in section 8 of the **Request form for household help services**

THP = Treating health practitioner

OT = Occupational therapist

ADL = Activities of daily living

Extension of long term HH services

- Once a worker is 3 years from date of injury/illness and is requesting ongoing household help services, the Agent must initiate an internal clinical review to determine if household help services should continue.